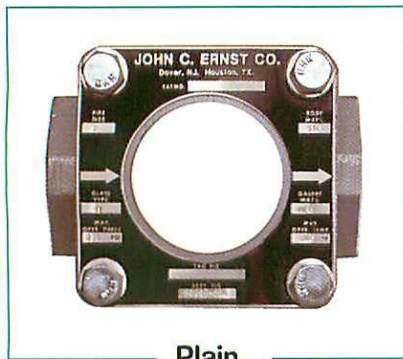


Medium Pressure – Double Window - Threaded

SIGHT FLOW INDICATORS

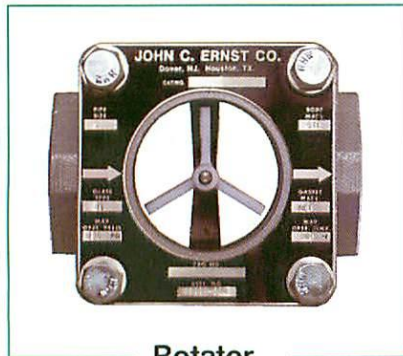


Plain

Plain – No indicator. For direct visual inspection of liquid. Mounts in any direction.

Model Body Material

- 010 Carbon Steel
- 040 Bronze
- 060 316 Stainless
- 090 Iron

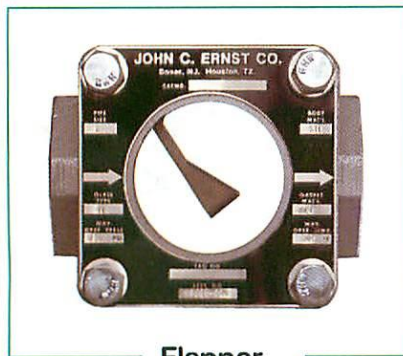


Rotator

Rotator – Paddlewheel indicator used for clear media to enhance flow indication. Any direction.

Model Body Material

- 011 Carbon Steel
- 041 Bronze
- 061 316 Stainless
- 091 Iron

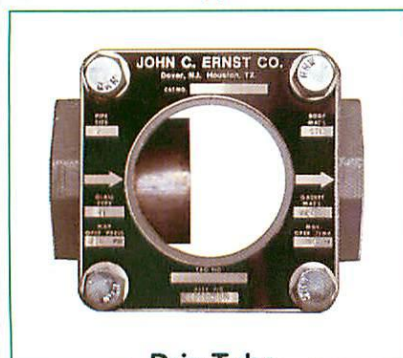


Flapper

Flapper – Side flapper to indicate flow in one direction. Not for vertical down flows.

Model Body Material

- 012 Carbon Steel
- 042 Bronze
- 062 316 Stainless
- 092 Iron



Drip Tube

Drip Tube – Designed for very low flows so fluid drips off tube insert. Mainly vertical mounts.

Model Body Material

- 013 Carbon Steel
- 043 Bronze
- 063 316 Stainless
- 093 Iron

Features

- ◆ Sizes 1/4" to 3" NPT
- ◆ 150# ANSI Rated
- ◆ Single Piece Cast Body
- ◆ Other Materials Available
- ◆ Tri-Clamp & Socketweld Connections Available

Ratings*

- ◆ **Carbon Steel:**
285 psi @ 100°F
230 psi @ 300°F
- ◆ **Bronze:**
225 psi @ 150°F
180 psi @ 300°F
- ◆ **Stainless Steel:**
275 psi @ 100°F
195 psi @ 400°F
- ◆ **Iron:**
175 psi @ 150°F
140 psi @ 300°F

Materials (Wetted)

- ◆ Glass: Temp Borosilicate
- ◆ Seals: Neoprene
Teflon in Stainless
- ◆ Rotator: Teflon
- ◆ Flapper: 316 SS
- ◆ Drip Tube : 316SS

*Temperature ratings are dependent on seal material

Note: Steam service requires mica shields, graphoil gaskets, and belleville washers.

Unit Size	Dimensions in Inches & (cm)				Wt lbs
	A	B	C	D	
1/4, 3/8	3 (7.6)	7/8 (2.2)	1 (2.5)	2-11/16 (6.8)	2
1/2, 3/4	3-3/4 (9.5)	1-1/4 (3.2)	1-1/2 (3.8)	3-3/16 (8.1)	3
1	4-1/4 (10.8)	1-1/2 (3.8)	2 (5.1)	4-1/4 (10.8)	5
1-1/4, 1-1/2	5-1/2 (14.0)	2-3/8 (6)	2-1/2 (6.4)	5 (12.7)	9
2	6-1/4 (15.9)	2-7/8 (7.3)	3-1/4 (8.3)	6-5/16 (16)	15
2-1/2, 3	8-1/2 (21.6)	3-3/4 (9.5)	4-1/8 (10.5)	8-1/8 (20.6)	30

