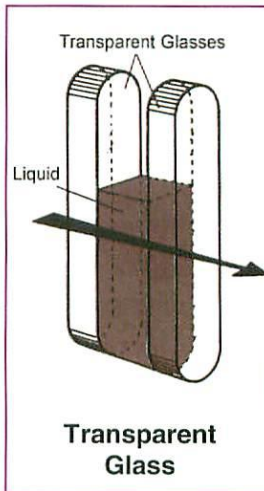
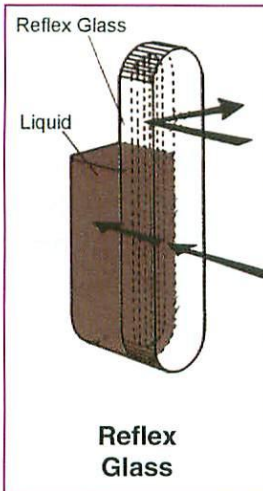


Flat Glass Gauge – Information

LIQUID LEVEL GAUGES

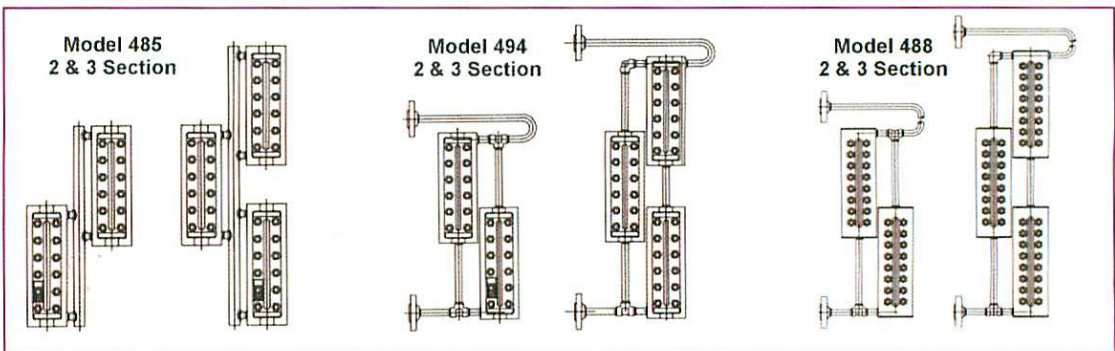
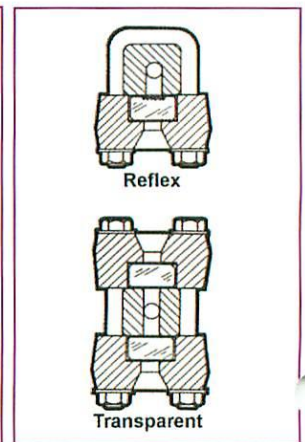
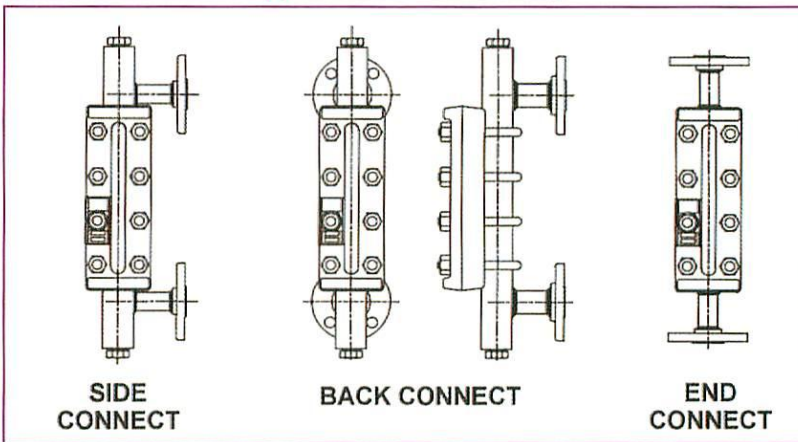


**3 Section
Reflex
Gauge**



Reflex Glass – allows light striking the area of the glass covered by liquid to pass to the interior of the gauge so the area appears dark. Light striking the open space above the liquid level is reflected back to the observer, so that area appears silvery similar to a mirror.

Transparent Glass – is used to see both the level of a liquid and its characteristics. Clear glass is mounted on the front and back of the gauge. This permits direct observation of such characteristics as color or the interface between two unmixable liquids in the same system.



STEAM/WATER GAUGE SELECTION GUIDE

Pressure @ Saturated Steam	Recommended Gauge Models ^{1,2}	Recommended Valve Models	Type of Valve/ Gauge Connection ³
350 psi @ 431°F	480 ⁴ or 490 ⁴	450 or 460	Rigid or Union
450 psi @ 456°F	490 ⁴	454 or 456	Stuffing Box ⁷
650 psi @ 494°F	490 ⁵	498	Stuffing Box ⁷
	485	498	Stuffing Box ⁷
1500 psi @ 596°F	494 ⁶	498	Expansion Loop
	488 ⁶	498	Expansion Loop

¹ Fire Box Quality steel plate chamber material is used on gauge Models 485, 494, and 488.

² Mica shields are standard on all transparent models to protect the glass from condensate which causes leaching of the glass except Model 490 and must be added at extra cost.

³ Expansion loops or stuffing box nipples are used to allow expansion caused by temperature variances.

⁴ Belleville washers are highly recommended at additional cost to reduce thermal effects on clamping pressures.

⁵ Belleville washers are required at extra cost to reduce thermal effects

⁶ Flange to flange assembly, which includes cranite gaskets, are required at extra cost.

⁷ Stuffing Box Nipples required at extra cost. The Model 498 valve must be ordered with a stuffing box.