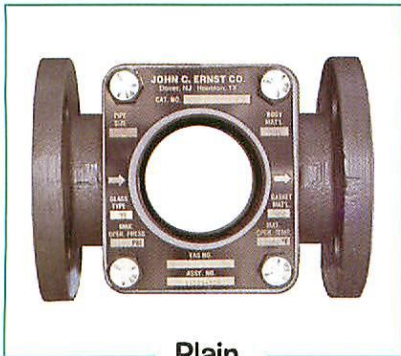


Medium Pressure – Double Window - Flanged



Plain

Plain – No indicator. For direct visual inspection of liquid. Mounts in any direction.

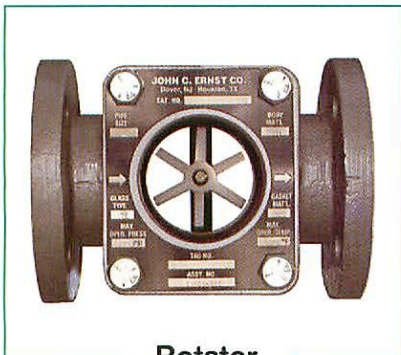
Model	Body Material
200	Carbon Steel
240	Bronze
260	316 Stainless
290	Iron

Features

- ◆ Sizes 1/2" to 16" Flanged
- ◆ 150# ANSI Rated
- ◆ Single Piece Cast Body
- ◆ Other Materials Available
- ◆ Teflon Lining Available

Ratings*

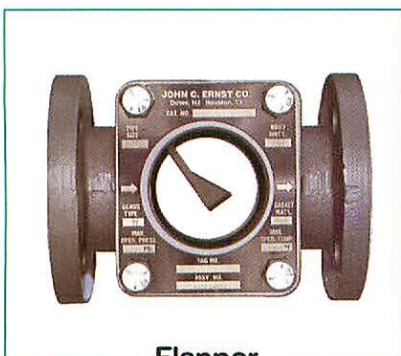
- ◆ **Carbon Steel:**
285 psi @ 100°F
230 psi @ 300°F
- ◆ **Bronze:**
225 psi @ 150°F
180 psi @ 300°F
- ◆ **Stainless Steel:**
275 psi @ 100°F
195 psi @ 400°F
- ◆ **Iron:**
175 psi @ 150°F
145 psi @ 300°F



Rotator

Rotator – Paddlewheel indicator used for clear media to enhance flow indication. Any direction.

Model	Body Material
201	Carbon Steel
241	Bronze
261	316 Stainless
291	Iron



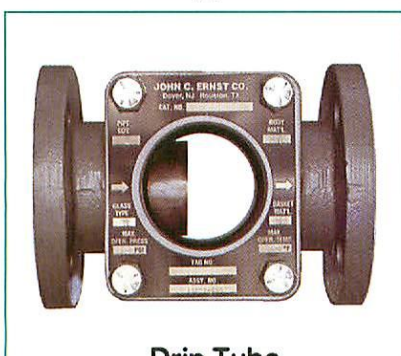
Flapper

Flapper – Side flapper to indicate flow in one direction. Not for vertical down flows.

Model	Body Material
202	Carbon Steel
242	Bronze
262	316 Stainless
292	Iron

Materials (Wetted)

- ◆ Glass: Temp Borosilicate
- ◆ Seals: Neoprene
Teflon in Stainless
- ◆ Rotator: Teflon
- ◆ Flapper: 316 SS
- ◆ Drip Tube : 316SS



Drip Tube

Drip Tube – Designed for very low flows so fluid drips off tube insert. Mainly vertical mounts.

Model	Body Material
203	Carbon Steel
243	Bronze
263	316 Stainless
293	Iron

For Iron units subtract 1/8" from "A" due to flat face Flanges.

*Temperature ratings are dependent on Seal material.

Note: Steam service requires mica shields, graphoil gaskets, and Belleville washers.

Unit Size	Dimensions in Inches & (cm)			
	A	B	D	Wt.lbs
1/2, 3/4	4-5/8 (11.7)	1-1/4 (3.2)	3-15/16 (10.0)	4
1	5-5/8 (14.3)	1-1/2 (3.8)	4-1/2 (11.4)	7
1-1/4, 1-1/2	6-1/2 (16.5)	2-3/8 (6.0)	5-3/4 (14.6)	15
2	7-7/8 (20.0)	2-7/8 (7.3)	7-3/8 (18.7)	26
2-1/2, 3	9-3/8 (23.9)	3-3/4 (9.5)	8-15/16 (22.7)	52
4	11 (27.9)	4-3/4 (12.1)	9-1/2 (24.1)	70
6	14-1/4 (36.2)	7 (17.8)	13-9/16 (34.5)	125

